

# Kern 996

## Cutting System

kernMail



**Efficient feed module – the cutter Kern 996 processes a wide variety of applications, offers great flexibility, and boasts high performance efficiency.**

The ergonomic design and the touch screen interface allow fast system access. The automated paper feed accelerates the setup process. The paper flow is clearly visible and easily accessible, so adjustments take little time.

The paper transport is equipped to handle both pinless and pinfeed material. All popular standard codes, such as bar code, data matrix, OMR, or OCR, can be processed securely. As the module is equipped with the same technology as the Kern 2600, Kern 3600, and Kern 5000 inserting systems, it fits seamlessly into the new product generation.

With the Kern 996, non-printed and non-formatted „white“ areas (White Paper) between two print jobs or during interruptions are detected and removed.

The GT grouping and diversion station diverts white, formatted, and non-formatted documents. The standard diverting bin capacity is 150 sheets (A4) which can be increased using a drop stacker where required. This streamlines processing and increases efficiency.

The optional FullPageScan reading for the Kern 996 reduces manual system interventions, thus accelerating job processing.

The flexible reading system reads various codes from any positions throughout the entire format range. This further increases the job processing reliability and security.

### Our Services

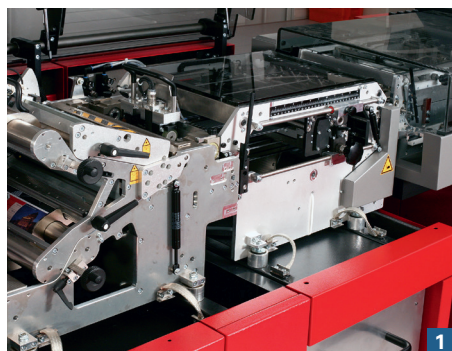
- Personal consulting on site
- Requirement analysis
- Working out an optimal solution
- System integration
- On-site training of your employees
- Comprehensive support during the operational phase

### Features

- **Pure cutting performance at 12"**
  - Max. 36'000 cuts/h with single cut
  - Max. 72'000 documents/h
  - Max. 32'000 cuts/h with double cut 1/6"
  - Max. 64'000 documents/h
- **Pure cutting performance at 4"**
  - Max. 55'000 cuts/h with single cut
  - Max. 110'000 documents/h
  - Max. 46'000 cuts/h with double cut 1/6"
  - Max. 92'000 documents/h
- Format width 1-up: 148–295 mm
- Format width 2-up: 296–520 mm
- Document length: 89–407 mm
- Document transport: pinless
- Variable double cut as program cut
- Processes all common standard codes such as barcode, data matrix, OMR or OCR
- Single cut and double cut setup with no knife change
- Fast, precise, flexible, and easy operation
- Kern mailFactory® compatible
- Compatible with:
  - Kern 1600, Kern 1600 continuous feed,
  - Kern 2600, Kern 3600, Kern 3800 and Kern 5000.



# Additional to the System **Kern 996**

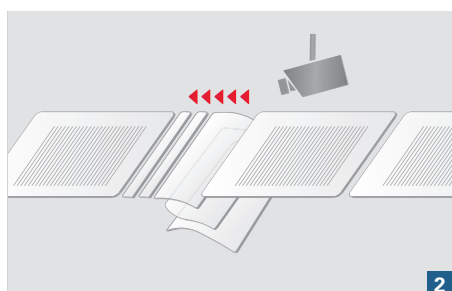


## 1 Grouping and Diverting station

With the new full color printers clients are being confronted with the issue of white zones within the printing flow. Up to now the documents had to be cut out by hand or transported through the system by special processing modes.

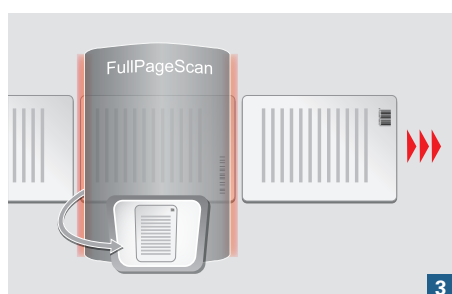
With the optional grouping and diverting station Kern now offers a solution which complements the Kern 996 perfectly.

The GT holds a diverting station which diverts white page documents, non-printed and non-formatted „white“ areas. The standard diverting capacity is 150 sheets which can be increased using a drop stacker when required.



## 2 White-Paper-Function

The Kern 996 high-speed cutter automatically detects white-paper-zones and systematically cuts them out. This optimizes further processing and considerably increases the efficiency.



Recognition of unprinted and unformatted white-paper documents is produced between print jobs or in case of interruptions. This is a challenge for insertion systems handling endless mailing jobs from the roll.

The Kern 996 high-speed cutter masters this challenge by automatically processing white- paper-zones in endless jobs – without requiring manual paper removal and reinsertion.

## 3 FullPageScan

The optional FullPageScan reading reduces manual access in the system, which accelerates the processing of jobs.

The flexible reading system reads different codes at any position over the complete format range, which increases reliability and security when processing a job.

### Kern AG

3510 Konolfingen  
Switzerland

Phone +41 31 790 35 35  
info.switzerland@kernworld.com  
www.kernworld.com