



Sphera DocumentValidation enables the active validation between the inserting system and the validation file of mail processing at document level.

Sphera DocumentValidation verifies the mail production on document level with a previously provided validation file. For every mail piece, the software validates the information in the file against the physical process at the machine like for instance the collation of pages to the inserting system.

Therefore, the validation information for an inserting system can be handled separately from the printed information; the electronic content can be revised during the production cycle.

To optimize the production process, the software provides the possibility to either automatically or manually trigger the reprint with the inhouse workflow management tool. The validation pro-

cess between physical production and validation file can be achieved either with input or output reading.

The status of every mail piece is updated during the job processing. After the run, a reprint file with all incomplete mail pieces will be generated.

Sphera DocumentValidation together with the Sphera InserterPanel enables the complete management of mail pieces during the job production.

Read / No Read

As an option, the Sphera Document Validation system can verify at the output of the machine if a datafile was read or not. In case of no read, the inserting system automatically diverts

Our Services

- We help to analyze the mail production process and offer consulting to integrate the Sphera DocumentValidation optimally in your mailroom environment
- Project management services over the entire integration
- Customizable software components and solutions
- On-site training for your employees

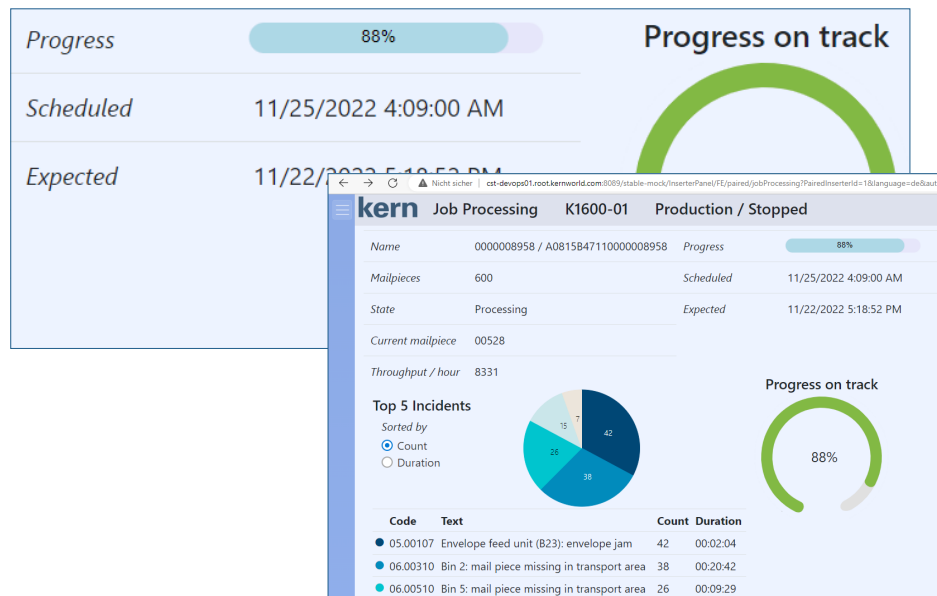
the corresponding mail piece – this would indicate that there is no address in the window visible.

Sequence Control

The Sphera DocumentValidation brings extra security during the job production with a sequence control. This function compared the mail piece identificatory from the input reading against the mail piece information read from the output reading.

In case the information is not the same, an identification alias can be added as an extra field to the validation file. The system will compare the mail piece identificatory against the defined alias, like for instance postal identification.

If there is a mismatch between the information given, the inserting system automatically diverts the mail piece and flags it in the validation file.



Kern AG

3510 Konolfingen
Switzerland

Phone +41 31 790 35 35
info.switzerland@kernworld.com
www.kernworld.com

Your technology partner |

kern